

# GLAZED-IN VENTILATORS

**T45**

*non thermally broken aluminium slimline glazed-in ventilator*

## INTRODUCTION

Aluminium slimline glazed-in ventilator for application in aluminium, timber and uPVC windows. The perforated inside grille performs as an insectmesh.

The unique design of the ventilator directs the flow of incoming air upwards. To ensure increased water- and windtightness the ventilator is fitted with a restraining clip.

## MATERIAL

Frame and tip: aluminium AlMgSi 0.5 (according to DIN 1748)

Finishing: satin anodised or powdercoated in any RAL or Syntha Pulvin® colour (dual colour possible)

Endcaps in ASA polymer type Luran S (colourfast, weather- and UV-resistant)

Endcaps are in black or white but also available in other colours upon request.

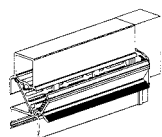
## DIMENSIONS

Glass reduction: 45 mm

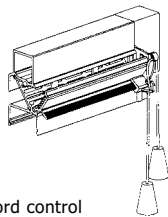
Height: 58 mm

Glass thickness: 4, 20, 24 & 28 mm

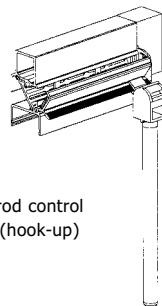
## CONTROLS



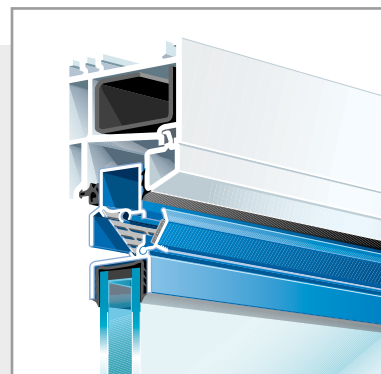
manual control



cord control



rod control  
(hook-up)



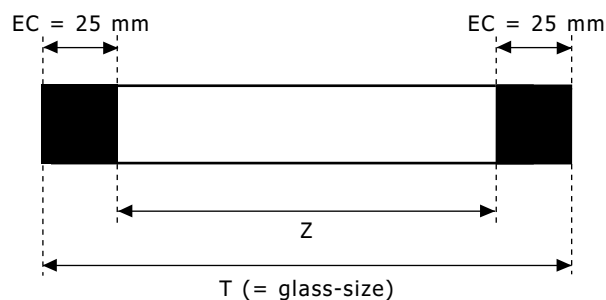
## ASSEMBLY

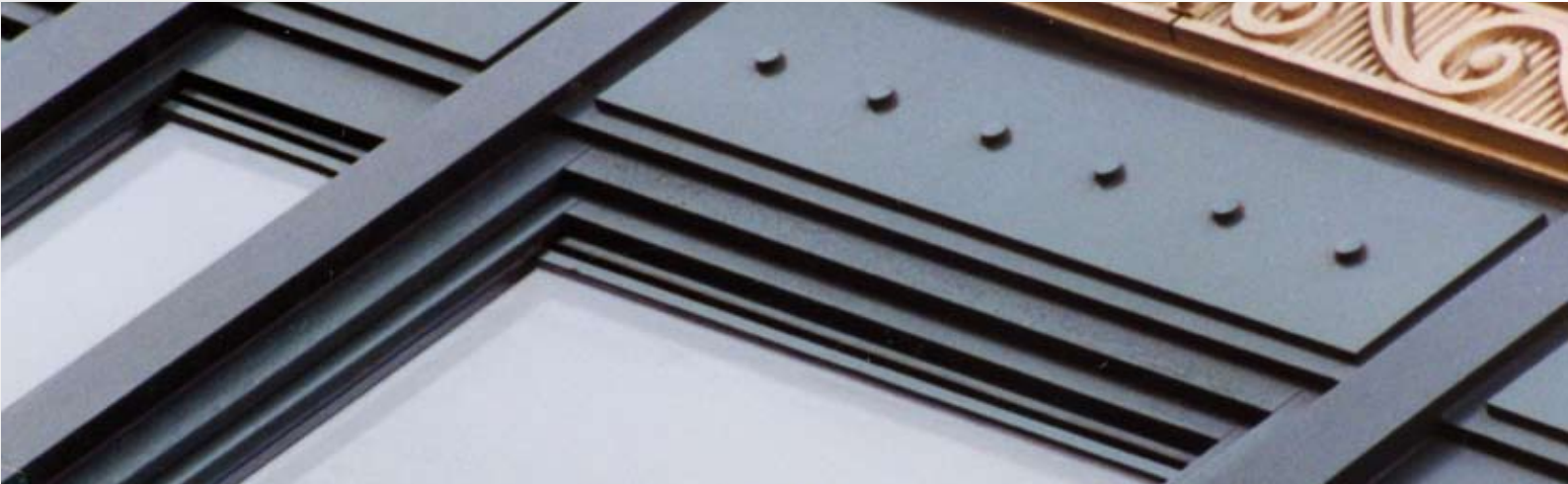
Developed for fabrication from bar lengths (6000 mm) or made to measure (maximum 2000 mm)

Cut ventilator to size from a bar length + fix endcaps (1 L + 1 R)

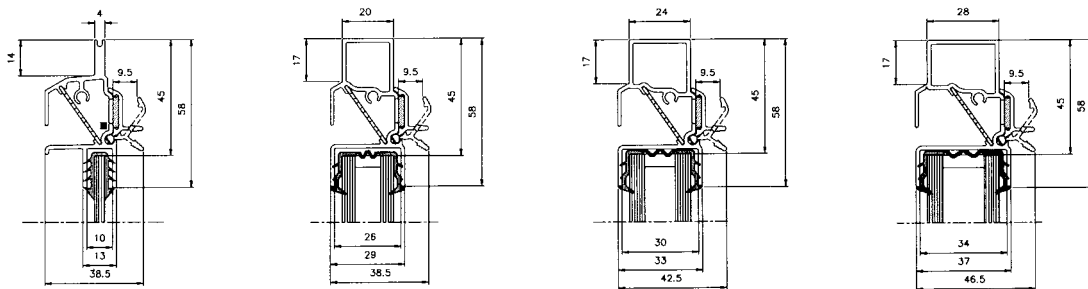
Overall dimension of the ventilator (T) = extrusion length (Z) + (2 x endcaps (EC))

We advise the use of glazing gasket RENSON nr 049 (20-28 mm) or nr 104 (4 mm) for installation.





## SECTION DETAILS



## TECHNICAL SPECIFICATIONS

	<b>T45</b>
<b>AIRFLOW</b>	
2 Pa	25,0 m <sup>3</sup> /h/m
2 Pa	6,9 l/s/m
1 Pa	4,9 l/s/m
Equivalent area	6256 mm <sup>2</sup> /m
<b>COMFORT</b>	
Sound reduction D <sub>n,e,w</sub> (C;C <sub>tr</sub> )	(EN ISO 140-10, EN ISO 717-1)
- in open position	27 (0;0) dB
- in closed position	44 (0;0) dB
Self regulating	no
<b>TECHNICAL CHARACTERISTICS</b>	
U-value	n.p.d.
Watertightness (closed position)	350 Pa
Windtightness	350 Pa