

## High-airflow wall louvres, pitch 60

### Material

- Made from aluminium sections: AlMgSi 0.5 (according to EN 12020-2)
- Stainless steel 304 mesh (6 x 6 mm) or insect screen (2.3 x 2.3 mm) on request
- Finishing: anodized in satin/bronze colour (20 micron) or powder-coated in any RAL or Syntha Pulvin colour (40 micron)

### Dimensions

- Blade pitch: 60 mm
- Depth to fit: 82 mm
- Flange size: 50 mm
- Minimum dimensions: 300 x 300 mm

### Fixing

- Brackets ref. 429
- For louvres larger than approx. 3 m<sup>2</sup>, a reinforcing mullion is required to suit span and windload

### Options

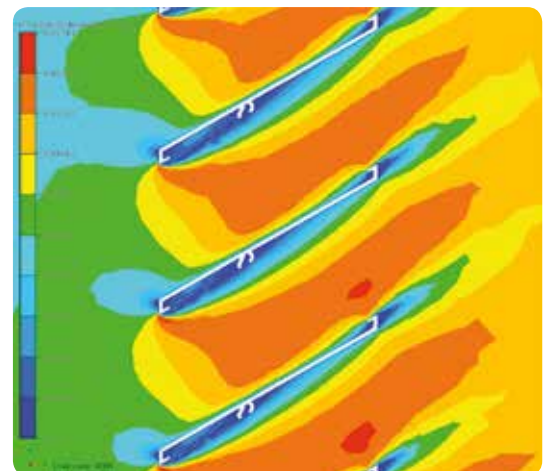
- Water channel
- Drainage profile
- Removable mesh
- Filter
- Without flange

### Typical applications

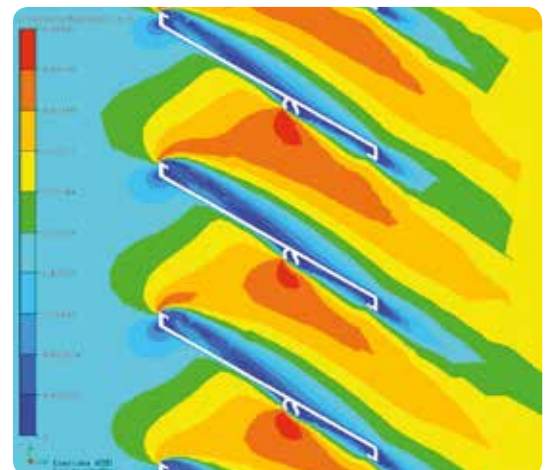
- Underground parkings
- Industrial applications



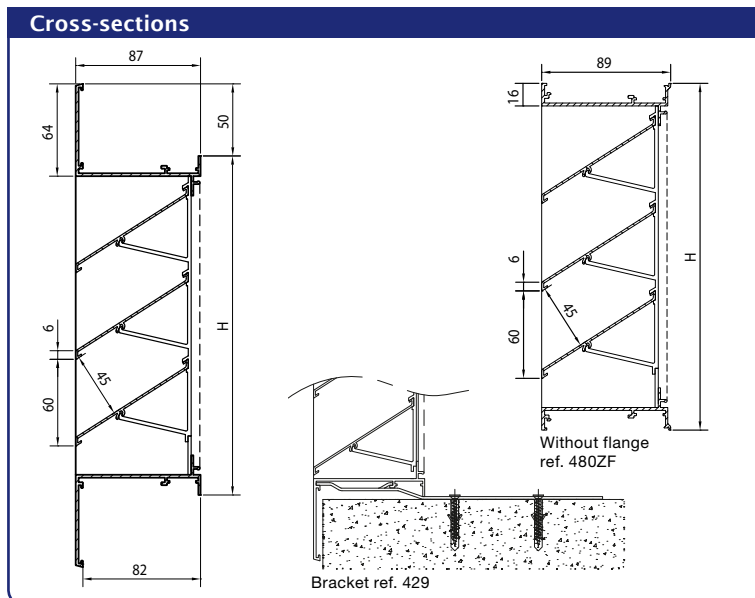
AIRFLOW



Supply



Discharge



Technical specifications	
	<b>480</b>
Airflow	(EN 13030)
K-factor (supply)	4,81
K-factor (discharge)	4,59
C <sub>e</sub> coefficient	0,456
C <sub>d</sub> coefficient	0,470
Technical data	
Visual free area	90 %
Physical free area	76 %
IP class (louvre with mesh; electrical installation at least 180mm from louver)	IP2XD