

## Burglarproof louvre class WK2 (RC2)

### Material

- Made from aluminum profiles AlMgSi 0.5 (according to EN 12020-2)
- Stainless steel insect mesh 304 - 2.3 x 2.3 mm or stainless steel mesh 304 6 x 6 mm upon request
- Finishing: anodized in satin/bronze colour (20 micron) or powder-coated in any RAL or Syntha Pulvin colour (40 micron)

### Dimensions

- Blade pitch: 50 mm
- Depth: 46 mm
- Flange size: 40 mm
- Minimum dimensions: 200 x 200 mm

### Options

- Water channel
- Drainage profile

### Features

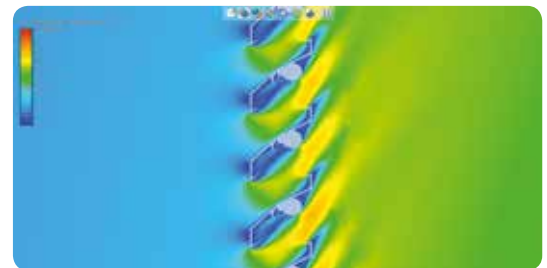
- Aesthetical and functional high-quality louvre:
  - Burglarproof according to class WK2 (RC2), certificate surface 0.44 <math>\leq 1.225 \text{ m}^2</math>, in accordance to prEN 1627 till 1630 (May 2009)
- Easy to install using brackets.
- 100% stainless:
  - Entirely assembled of aluminum profiles
  - All connecting pieces in aluminum and stainless steel

### Typical applications

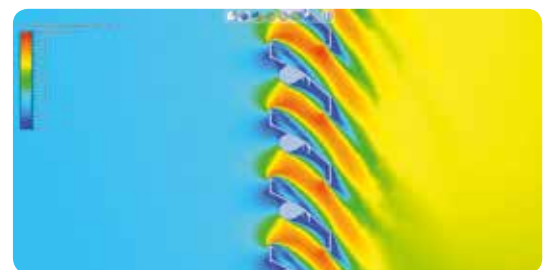
- Schools
- Shops
- Apartments



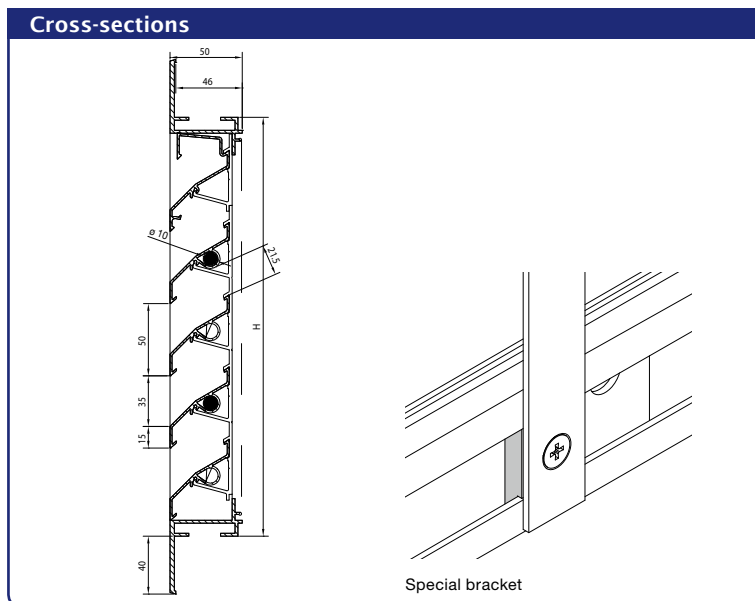
AIRFLOW



Supply



Discharge



Technical specifications	
	<b>421WK2</b>
<b>Airflow</b>	(EN 13030)
K-factor (supply)	13,82
K-factor (discharge)	12,85
C <sub>e</sub> coefficient	0,269
C <sub>d</sub> coefficient	0,279
<b>Technical data</b>	
Visual free area	70 %
Physical free area	43 %
Aesthetically identical to the standard louvre 421	

