

Floor grille, heavy-duty series

Material

- Made from aluminium sections: AlMgSi 0.5 (according to EN 12020-2)
- Finishing: anodized in satin/bronze colour (20 micron) or powder-coated in any RAL or Syntha Pulvin colour (40 micron)
- The frame is lined with a rubber gasket to guarantee a reduced noise level

Dimensions

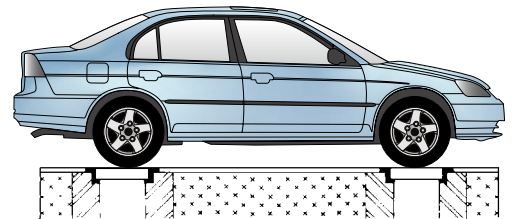
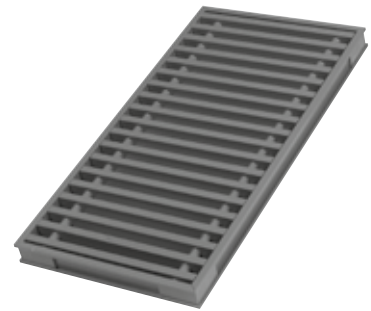
- Bar spacing: 12.5 mm
- Grille section: 20 x 8 mm
- Maximum dimensions:
 - Frame length: 3500 mm
 - Louvre length in pieces of ± 1000 mm
 - Max length per louvre: 1400 mm
 - Width of frame: 900 mm
- Effective opening = length and width - 50 mm
- Bars arranged crosswise

Fixing

- Brackets ref. 231

Typical applications

- Grilles for swimming pool drains, cellars, garages, car parks, abattoirs, etc.
- To cover underfloor wiring ducts in computer rooms.



Cross-sections

- 371 / 1: Floor grille with flangeless "L" frame
- 371 / 3: Frameless floor grille

Technical specifications	
	371
Technical data	
Visual free area	61 %
Physical free area	61 %