

L.150DAC / L.170DAC < Blade types



Extruded aluminium blade

Extruded aluminum profile with a step of 150 or 170 mm, according acoustic system (*). This can be perfectly combined with the acoustic blades L.150ACS.01 / L.150ACL.01, on places in the wall where no acoustic damping is required.

Materials

- Extruded aluminium, EN AW - 6063 T66

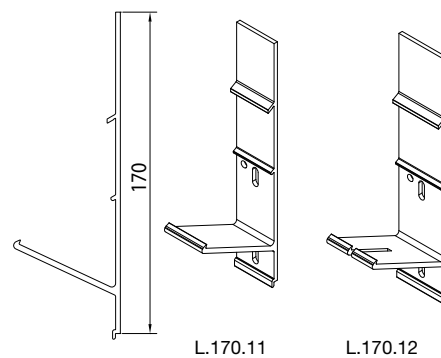
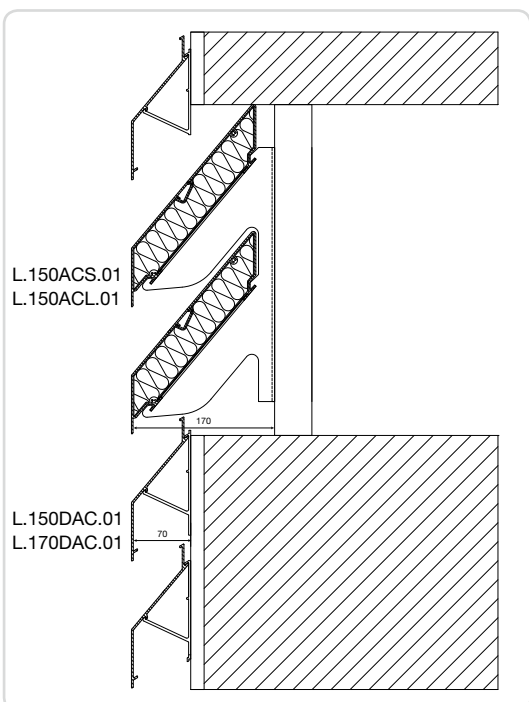
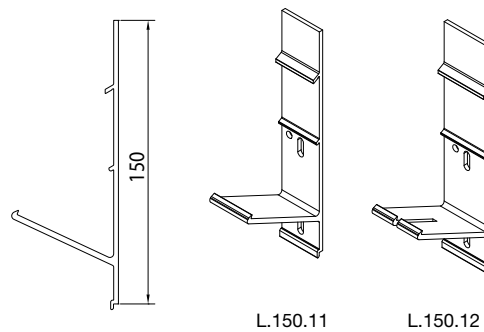
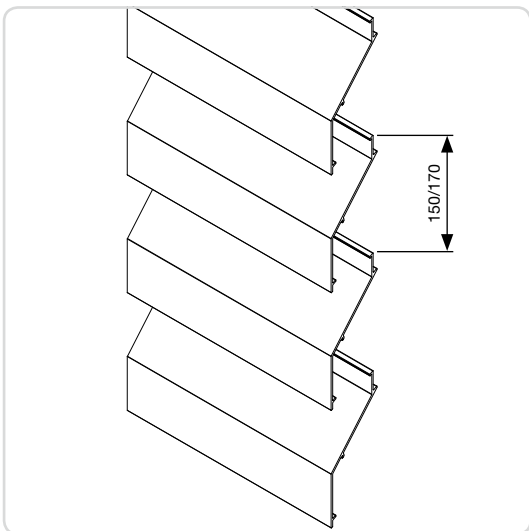
Finish

- Anodised (20 micron)
- Polyester powder coating RAL or Syntha Pulvin® colours (60 - 80 µ/40 µ (UK))

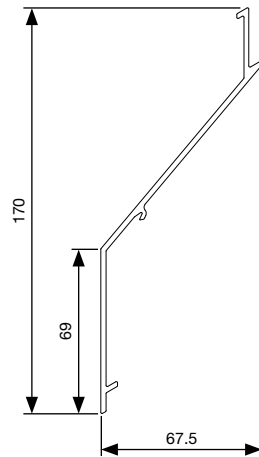
Blade support

- Single blade support: type L.150.11 or L.170.11 (*)
- Double blade support for thermal expansion: type L.150.12 or L.170.12 (*)

(*) pitch of the blade according to system L.150DAC of L.170DAC



Technical drawing



Technical data

	L.150DAC	L.170DAC
Pitch	150 mm	170 mm
Depth	67,5 mm	
Height	170 mm	
Physical free area*	34%	37%
K-Factor*, supply	47,7	42,47
K-Factor*, extraction	41,08	37,58
Max. unsupported span between two mullions**	ca. 2.400mm	

* Definition see p. 50

** At q_b 800 Pa wind pressure

