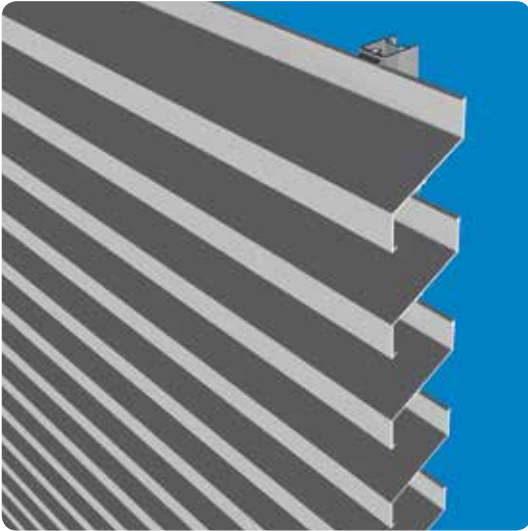


## L.120 < Blade types



### Extruded aluminium blade

Extruded aluminium profile for large spans at 120 mm pitch with an optimal air flow. Improved installation speed thanks to a small number of clips and blades.

#### Materials

Aluminium extrusion, alloy EN AW 6063 T66

#### Finish

- Anodised (20 micron)
- Polyester powder coating RAL or Syntha Pulvin® colours (60 - 80 µ/40 µ (UK))

#### Mesh

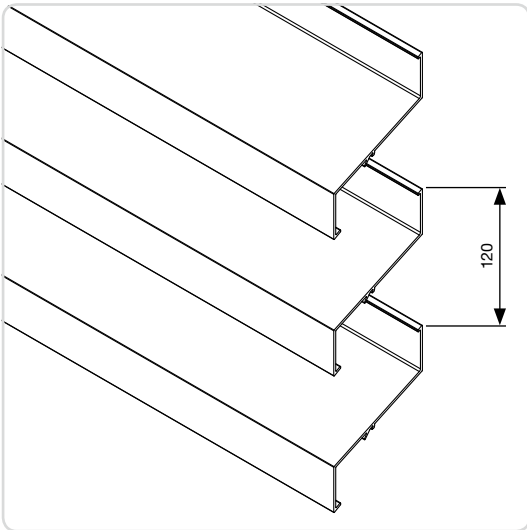
Fixed to rear of the support structure.

#### Doors

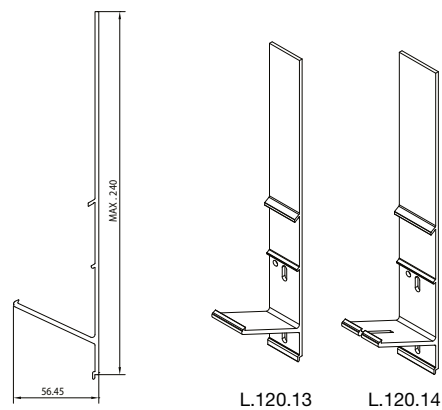
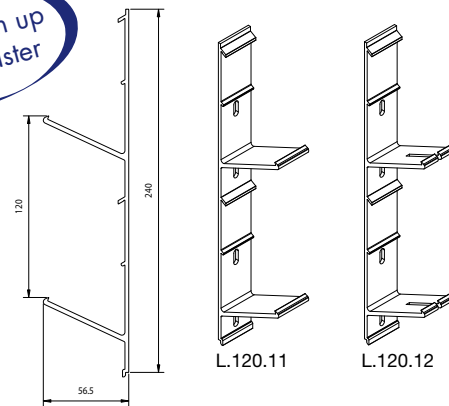
Single and double doors available with standard RENSON® hardware and rotating on pivot (see p. 71-72)

#### Blade support

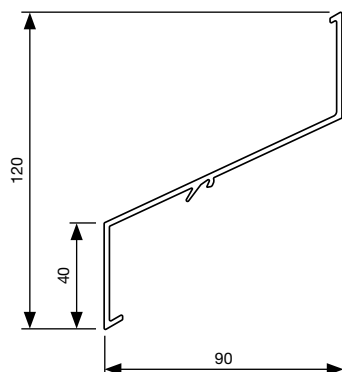
- Single blade support: Type L.120.11 (width: 28 mm)
- Double blade support for thermal expansion: L.120.12 (width: 34 mm) (connecting piece for 2 blades)
- Blade supports for variable pitches 120-240 mm
- Single blade support: type L.120.13 (width 28 mm)
- Double blade support for thermal expansion: type L.120.14 (width 34 mm) (connecting piece for 2 blades)



Installation up to x2 faster



## Technical drawing



## Technical data

	L.120
Pitch	120 mm
Depth	90 mm
Height	120 mm
K-Factor*, supply	13,82
K-Factor*, extraction	14,68
Visual free area*	66%
Physical free area*	60%
Max. unsupported span between two mullions**	2300 mm

\* Definition see p. 50

\*\* At  $q_b$  800 Pa wind pressure

